

Physicians Discover Benefits of Sublative Rejuvenation

By Bob Kronemyer, Associate Editor



Hema Sundaram, M.D., F.A.A.D.
Dermatologist
Washington, D.C.

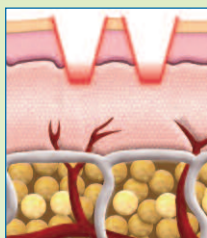
“Sublative Rejuvenation is the ultimate two-in-one treatment providing impressive improvement in wrinkles and scars, plus very significant skin tightening for all skin types.”



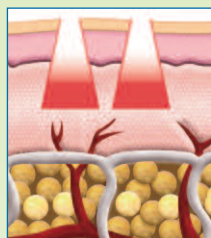
Before Tx

Immediately after Sublative Rejuvenation Tx

Photos courtesy of Hema Sundaram, M.D., F.A.A.D.



Traditional Fractional Resurfacing



Sublative Rejuvenation

In 2004, fractional resurfacing achieved popularity with its promise of dramatic results and downtime reduced from days to weeks. However, even with less epidermal disruption, fractional resurfacing is not recommended for all skin types due to the high risk of hypo- or hyperpigmentation. Syneron, Inc.'s (Irvine, Calif.) Sublative Rejuvenation™ is breaking new grounds by offering an innovative application that surpasses other modalities in efficacy, safety, versatility and profitability.

“We’ve had a progression of treatments over the years – from ablative laser resurfacing to fractional laser resurfacing,” said Hema Sundaram, M.D., F.A.A.D., a dermatologist in private practice in suburban Washington, D.C. “However, there are significant limitations to conventional fractional laser resurfacing, such as achieving maximum collagen remodeling to obtain the most improvement in wrinkles, scars and skin tightening. To achieve the best possible results, you need to optimize the energy delivered to the dermis without causing undue epidermal damage.”

Sublative Rejuvenation uses RF sublation™, which is a fractionated bi-polar radiofrequency technology that delivers significant deep and volumetric dermal impact to maximize collagen remodeling without causing unwanted epidermal damage. “This allows us to reach further in the dermis since we are sparing the epidermis,” Dr. Sundaram noted. “Once the energy penetrates down into the dermis, where there is a higher conductance, the energy spreads out wider creating optimal impact within the dermis. It is a completely new paradigm of skin rejuvenation and by far one of the most advanced concepts in fractional resurfacing.”

Dr. Sundaram also pointed out that Sublative Rejuvenation is unlike any other treatment because it is suitable for all Fitzpatrick skin types and all degrees

of pigmentation. “The older ablative fractional laser technology has limitations when dealing with skin of color.” In addition, “Sublative Rejuvenation is the ultimate two-in-one treatment providing impressive improvement in wrinkles and scars, plus very significant skin tightening for all skin types: from the fairest to the darkest.”

Sublative Rejuvenation requires a minimum of two to five sessions – depending on the intensity selected – spaced four to six weeks apart. “The results are excellent and feedback from patients has been extremely positive,” Dr. Sundaram reported. A full-face session takes only 20 minutes, “whereas some of the previously developed technologies take up to 45 minutes or even an hour, so it is very time-effective.”

Moreover, Sublative Rejuvenation has little to no associated downtime – social or clinical. “Treating at the highest energy level may result in minimal edema for a couple of days, allowing the patient to almost immediately continue their daily routine with light make-up,” Dr. Sundaram observed. “It is much less than I’ve seen with any other technology for equivalent results.”

Although Dr. Sundaram has several other fractional resurfacing technologies in her office, she pointed out that Sublative Rejuvenation has become her treatment of choice. “It has become a mainstay in my rejuvenation strategies for patients of all age groups, with different objectives and skin types,” she said. “My patients have benefited greatly from adding Sublative Rejuvenation to their treatment regime.”

Sublative Rejuvenation is available with Syneron’s eMatrix system, or as an upgrade to eMax, eLaser and eLight systems. The ergonomic applicator delivers bi-polar RF energy via a matrix of electrodes on the disposable applicator tip.